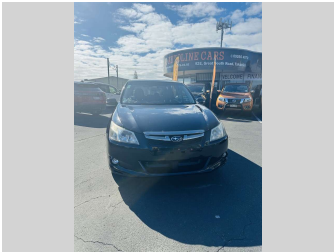
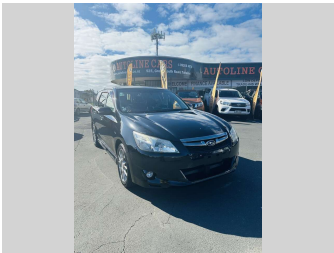


2012 Subaru EXIGA 2.0I-SADO VANTAGE LINE



Purchase Price

Includes GST, Registration & Licensing

\$17,995

Finance may be available on this vehicle. Ask one of our friendly staff for more information.



Gain peace of mind with Mechanical Breakdown Insurance. **Ask us how.**



Top features

None Listed

Body Style

Station Wagon

Odometer

109,242 km

Engine

2000 cc

Fuel Type

Petrol

Transmission

Auto

Wheels

-

VIN

7AT0GF1RX25019985

Interior

-

Safety



Based on 2024 UCSR rating for 09-14 models

Reg No.

-

Ext Colour

Black

History

-

Seats

7 seats

CO2 Emissions

★★★★☆☆

195 grams/km

Energy Economy

★★☆☆☆☆

Annual fuel cost of \$3,250
8.3L per 100km

Cost per year is an estimate based on petrol price of \$2.80 per litre and an average distance of 14000 km. Emissions and Energy Economy figures standardised to 3P WLTP.

Stock ID: 5075



Autoline Cars | Phone 09 266 4070 | Email sales@autolinecars.co.nz
92E Great South Road, Takanini, Takanini 2112, New Zealand
www.autolinecars.co.nz